

# Helpman LEX 12N E

## Specifications

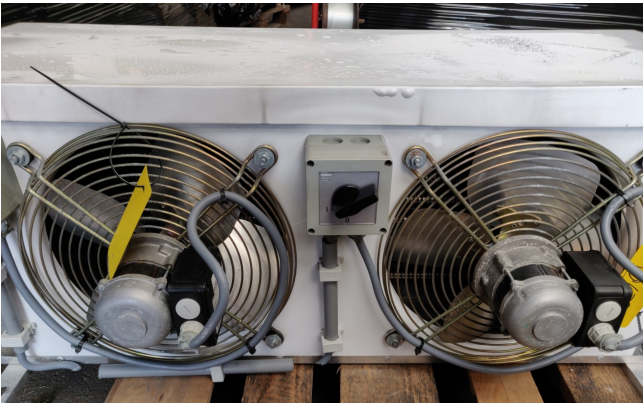
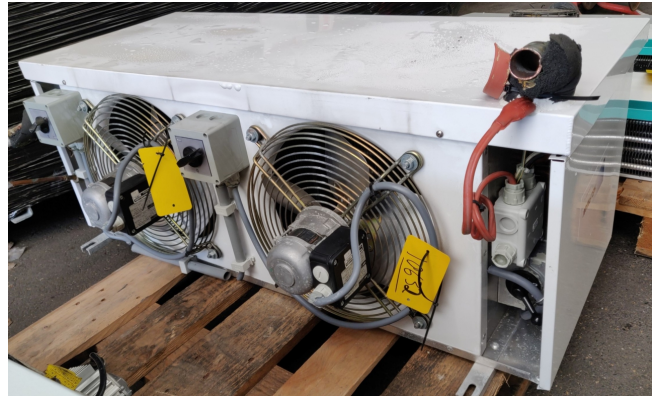
Hersteller	Helpman
Typ	LEX 12N E
Kälteleistung kW	5.3
Kältemittel	Freon
Anzahl der Ventilatoren	2
Ventilator Durchmesser in mm	7
Abtauung	None
Luftdurchsatz in m <sup>3</sup> /h	3010
Volume	6.8 dm <sup>3</sup>
Gewicht	38 kg
Stock	1

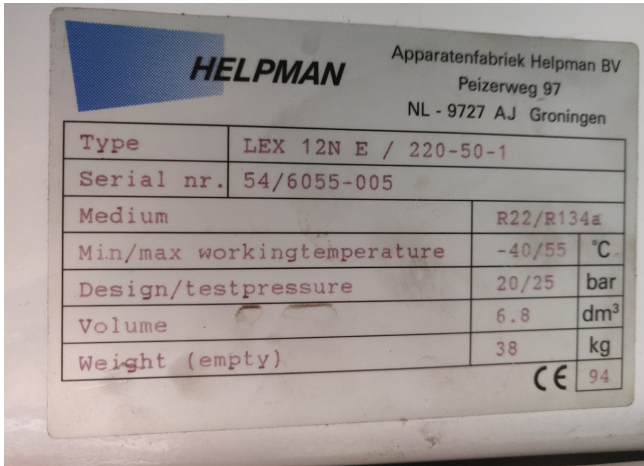


## Description

### Used Helpman LEX 12N E

Used and in good condition Evaporator Helpman LEX 12N E. \*All components of this used evaporator will be tested on good working, leak free condition (electro engines), coils, bearings) Choosing HOSBV means buying with warranty. We perform a industrial cleaning. Also, we can arrange your shipment





### Nominal Capacities (kW)

Cooler type	R 22	R 134a	R 404A	For reference only		
	frosted DT <sub>1</sub>	frosted DT <sub>1</sub>	frosted DT <sub>1</sub>	dry conditions DT <sub>1</sub>		
	R 22	R 134a	R 404A	R 22	R 134a	R 404A
<b>Fin spacing 4 mm</b>						
LEX 2-4	1.5	1.3	1.5	1.3	1.1	1.3
LEX 4-4	1.9	1.5	1.8	1.7	1.3	1.6
LEX 6-4	2.8	2.4	2.8	2.4	2.1	2.5
LEX 8-4	4.7	4.1	4.7	4.1	3.5	4.1
LEX 10-4	4.7	4.4	4.8	4.1	3.8	4.2
LEX 12-4	5.9	5.6	6.2	5.1	4.9	5.4
LEX 14-4	6.5	6.4	7.1	5.7	5.6	6.2
LEX 16-4	8.7	8.4	9.3	7.5	7.3	8.1
LEX 18-4	9.7	8.7	9.8	8.5	7.6	8.6
LEX 20-4	12.8	10.8	12.7	11.2	9.4	11.0
LEX 22-4	16.1	13.0	15.4	14.0	11.3	13.4
LEX 24-4	20.0	16.1	19.2	17.4	14.0	16.7
LEX 26-4	26.0	23.0	26.0	22.6	20.0	22.6
LEX 28-4	32.8	29.0	33.2	29.5	25.2	28.9
LEX 30-4	40.3	32.5	38.5	35.0	28.3	33.4

### Fin spacing 7 mm

LEX 2-7	1.3	1.2	1.3	1.1	1.0	1.2
LEX 4-7	1.7	1.4	1.7	1.5	1.2	1.4
LEX 6-7	2.5	2.2	2.5	2.2	1.9	2.2
LEX 8-7	4.1	3.7	4.3	3.6	3.3	3.7
LEX 10-7	3.7	3.6	4.0	3.2	3.2	3.5
LEX 12-7	5.0	4.9	5.3	4.4	4.3	4.6
LEX 14-7	5.5	5.5	6.0	4.8	4.8	5.2
LEX 16-7	7.4	7.3	8.0	6.4	6.3	7.0
LEX 18-7	8.5	7.8	8.8	7.4	6.8	7.6
LEX 20-7	11.4	10.0	11.4	9.9	8.7	9.9
LEX 22-7	14.5	12.4	14.3	12.6	10.7	12.4
LEX 24-7	18.1	15.6	17.8	15.7	13.5	15.5
LEX 26-7	22.8	21.2	23.4	19.8	18.4	20.4
LEX 28-7	28.5	26.5	29.3	24.8	23.0	25.5
LEX 30-7	36.5	31.0	35.9	31.7	27.0	31.2

## Blow Through Unit Coolers 1.5 - 40 kW LEX

Cooler type	Dimensions mm							Shipp. vol. m <sup>3</sup>	Cooler weight kg		Coil surface m <sup>2</sup>		Int. vol. dm <sup>3</sup>	Refrig. conn. O.D.S.	
	A	B	D	F	G	H	K		4 mm	7 mm	4 mm	7 mm		inlet	suction
LEX 2-*	598	412	465	365	-	380	380	0.3	18	17	7.7	4.7	2.1	1/2"	1/2"
LEX 4-*	658	472	495	395	-	430	440	0.3	22	21	11.2	6.7	3.0	1/2"	1/2"
LEX 6-*	658	472	605	503	-	430	440	0.3	27	25	16.8	10.1	4.0	1/2"	1/2"
LEX 8-*	788	602	640	503	-	505	570	0.6	38	35	26.1	15.7	6.0	1/2"	22 mm
LEX 10-*	1106	905	696	503	-	630	690	0.6	46	43	39.4	23.4	6.0	1/2"	22 mm
LEX 12-*	1106	920	605	503	-	430	880	0.5	42	38	33.6	20.2	6.8	1/2"	28 mm
LEX 14-*	1110	792	792	520	35	675	760	0.7	65	61	46.4	27.9	10.4	1/2"	28 mm
LEX 16-*	1460	1180	690	500	35	520	1140	1.0	71	65	52.2	31.4	11.6	1/2"	35 mm
LEX 20-*	1640	1360	710	520	35	600	1320	1.3	85	88	70.5	42.4	15.5	1/2"	35 mm
LEX 22-*	1880	1560	790	520	35	675	1520	1.7	100	111	92.8	55.9	20.4	1/2"	42 mm
LEX 24-*	1880	1560	950	630	110	825	1520	2.2	139	128	116.0	69.8	28.2	1/2"	42 mm
LEX 28-*	2650	2228	730	520	35	675	2290	2.3	172	159	139.8	84.2	30.9	1/2"	54 mm
LEX 28-*	2650	2328	800	630	110	825	2290	3.0	202	186	174.7	105.2	39.8	1/2"	54 mm
LEX 30-*	3420	3098	920	630	110	825	3050	3.9	278	256	232.7	140.1	51.1	1/2"	54 mm

Cooler type	Fans 50 Hz				Electric defrost			
	number	diameter mm	air volume fin spacing 4 mm 7 mm m <sup>3</sup> /h m <sup>3</sup> /h	air <sup>2</sup> throw m	sound level dB(A)	fan power nominal/absorbed 220/1 380/3 W W	number of elements	defrost power <sup>5</sup> kW kW
LEX 2-*	1	254	1000 1080	10	48	30/80 30/85	1	1.28
LEX 4-*	1	305	1490 1570	12	50	30/100 30/100	1	1.76
LEX 6-*	1	305	1420 1500	12	50	30/100 30/100	2	2.64
LEX 8-*	1	356	2490 2600	15	53	70/180 90/145	2	3.0
LEX 10-*	2	305	2930 3100	15	53	30/100 30/100	2	4.8
LEX 12-*	2	305	2860 3010	15	53	30/100 30/100	2	4.8
LEX 14-*	1	457	4430 4660	20	60	220/380 250/400	5	6.0 4.5
LEX 16-*	2	356	4980 5280	20	56	70/160 90/145	2	5.4
LEX 20-*	2	406	6730 7080	20	60	70/230 90/215	5	6.4 6.3
LEX 22-*	2	457	8650 9320	20	63	220/380 250/400	5	13.2 9.8
LEX 24-*	2	508	11000 11600	20	66	220/430 250/480	5	13.2 9.9
LEX 26-*	3	457	13000 14000	20	65	220/380 250/400	5	19.2 14.4
LEX 28-*	3	508	16600 17500	20	68	220/430 250/480	5	19.2 14.4
LEX 30-*	4	508	22200 23400	20	69	220/430 250/480	10	24.0 18.0